



Impeccable craft, effortless style  
The stunning new

# TARGA 63 GTO



Every. Perfect. Detail.

# Designed to have it all

Meet the future of Fairline...and the perfect expression of Italian flair, Dutch ingenuity and British craftsmanship beautifully combined. The award-winning Targa 63 GTO is our first model created by renowned Italian superyacht designer, Alberto Mancini. Teamed with our experienced in-house designers, his innate sense of flair has led to a yacht that's innovative, versatile, light, bright and achingly stylish.

At first glance it is difficult to ignore the Mancini touch, which is in every curve of the dramatic new hull and sleek profile. On-board innovations abound, including a large, sliding, glazed sunroof and powered patio doors that disappear through the cockpit floor to give you the benefits of an OPEN and GT combined. The very flexible interiors seamlessly offer a wide range of cabin and saloon options that suit your needs. It's the Fairline thrill, with added style.





TARGA  
63 GTO

INTRODUCTION

MAIN  
FEATURES

EXTERIOR  
DESIGN

INTERIOR  
DESIGN

PRINCIPLE  
DIMENSIONS

GENERAL  
ARRANGEMENTS

CELEBRATING  
50 YEARS

DEALERS



# Same attention to craft, new bold design language

The Targa 63 GTO is an evolution, not a revolution. In fact, it is still instantly recognisable as a Fairline. Combined with the rigorous and proven naval architecture by renowned Dutch firm Vripack, and matched with the usual unparalleled Fairline craftsmanship, it's a natural step for anyone who wants stunning good looks and creative flair from bow to stern.

#### SPECIFICATION HIGHLIGHTS

- **Designed by Alberto Mancini**
- **Naval architecture by Vripack**
- **Lowering patio doors**
- **Powered glazed sunroof**
- **Powered sunshade over cockpit**
- **'Fresh air maker' air conditioning**
- **f-Drive multifunction glass bridge**
- **Fully integrated audio/visual systems throughout**
- **Foredeck seating & sunbeds**
- **Single or twin crew cabin options**
- **Garage for Williams 325 TurboJet & a pair of SEABOB's**



TARGA  
63 GTO

INTRODUCTION

MAIN  
FEATURES

EXTERIOR  
DESIGN

INTERIOR  
DESIGN

PRINCIPLE  
DIMENSIONS

GENERAL  
ARRANGEMENTS

CELEBRATING  
50 YEARS

DEALERS

  
**FAIRLINE**  
YACHTS



TARGA  
63 GTO

INTRODUCTION

MAIN  
FEATURES

EXTERIOR  
DESIGN

INTERIOR  
DESIGN

PRINCIPLE  
DIMENSIONS

GENERAL  
ARRANGEMENTS

CELEBRATING  
50 YEARS

DEALERS

  
**FAIRLINE**  
YACHTS



TARGA  
63 GTO

INTRODUCTION

MAIN  
FEATURES

EXTERIOR  
DESIGN

INTERIOR  
DESIGN

PRINCIPLE  
DIMENSIONS

GENERAL  
ARRANGEMENTS

CELEBRATING  
50 YEARS

DEALERS

  
**FAIRLINE**  
YACHTS



TARGA  
63 GTO

INTRODUCTION

MAIN  
FEATURES

EXTERIOR  
DESIGN

INTERIOR  
DESIGN

PRINCIPLE  
DIMENSIONS

GENERAL  
ARRANGEMENTS

CELEBRATING  
50 YEARS

DEALERS

  
**FAIRLINE**  
YACHTS



TARGA  
63 GTO

INTRODUCTION

MAIN  
FEATURES

EXTERIOR  
DESIGN

INTERIOR  
DESIGN

PRINCIPLE  
DIMENSIONS

GENERAL  
ARRANGEMENTS

CELEBRATING  
50 YEARS

DEALERS

  
**FAIRLINE**  
YACHTS





TARGA  
63 GTO

INTRODUCTION

MAIN  
FEATURES

EXTERIOR  
DESIGN

INTERIOR  
DESIGN

PRINCIPLE  
DIMENSIONS

GENERAL  
ARRANGEMENTS

CELEBRATING  
50 YEARS

DEALERS

  
**FAIRLINE**  
YACHTS



TARGA  
63 GTO

INTRODUCTION

MAIN  
FEATURES

EXTERIOR  
DESIGN

INTERIOR  
DESIGN

PRINCIPLE  
DIMENSIONS

GENERAL  
ARRANGEMENTS

CELEBRATING  
50 YEARS

DEALERS

  
**FAIRLINE**  
YACHTS



TARGA  
63 GTO

INTRODUCTION

MAIN  
FEATURES

EXTERIOR  
DESIGN

INTERIOR  
DESIGN

PRINCIPLE  
DIMENSIONS

GENERAL  
ARRANGEMENTS

CELEBRATING  
50 YEARS

DEALERS

  
**FAIRLINE**  
YACHTS



TARGA  
63 GTO

INTRODUCTION

MAIN  
FEATURES

EXTERIOR  
DESIGN

INTERIOR  
DESIGN

PRINCIPLE  
DIMENSIONS

GENERAL  
ARRANGEMENTS

CELEBRATING  
50 YEARS

DEALERS

  
**FAIRLINE**  
YACHTS

Innovatively styled  
for maximum enjoyment



TARGA  
63 GTO

INTRODUCTION

MAIN  
FEATURES

EXTERIOR  
DESIGN

INTERIOR  
DESIGN

PRINCIPLE  
DIMENSIONS

GENERAL  
ARRANGEMENTS

CELEBRATING  
50 YEARS

DEALERS

  
**FAIRLINE**  
YACHTS

# The inside is good-looking too

In the spirit of building the perfect yacht at every possible level, we have also carefully created four different interior design schemes for you to choose from:



## AMALFI

Inspired by Liguria's local architecture, this scheme exudes the sunny warmth synonymous with fragrant Italian lemon trees and the umbrella-lined shores of the Amalfi coast.



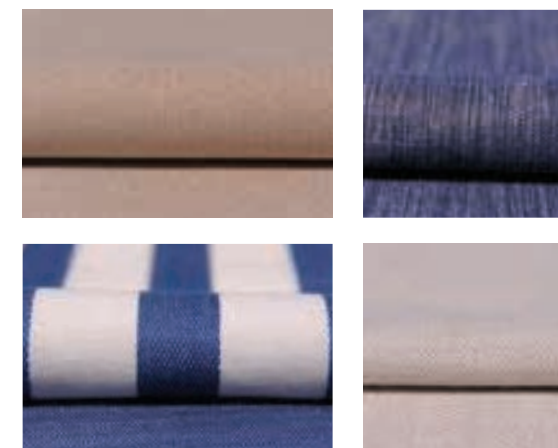
## CAPRI

Understated, earthy colours, effortlessly combined with rich natural textures. All the hallmarks of an interior design collection that is as gentle as the Mediterranean breeze.



## HAMPTONS

Evoking elegant vintage design cues, whilst offering a bold and contemporary interpretation of the luxury that was once the preserve of America's East Coast.



## ST. TROPEZ

An ode to the sea where all manner of deep, oceanic blues tastefully swirl with muted greys, delicate creams and classic nautical motifs.



TARGA  
63 GTO

INTRODUCTION

MAIN  
FEATURES

EXTERIOR  
DESIGN

INTERIOR  
DESIGN

PRINCIPLE  
DIMENSIONS

GENERAL  
ARRANGEMENTS

CELEBRATING  
50 YEARS

DEALERS

  
**FAIRLINE**  
YACHTS



## Cleaner, sleeker profile

- Length overall (inc. pulpit): 65'4" (19.96m)
- Length overall (exc. pulpit): 65'2" (19.88m)
- Beam: 17'2" (5.23m)
- Number of Berths: 6 – 10
- Height above waterline (inc. arch & nav. light mast): 17' (5.20m)
- Draught: 4'8" (1.47m)
- Transport height: 16'4" (5.0m)
- Weight: 33.56 imp. tons / 37.47 US tons (34,000kg)
- Fuel Capacity: 1,029 gallons / 1,236 US gallons (4,680 litres)
- Water Capacity: 237 gallons / 285 US gallons (1,080 litres)

### ENGINES & PERFORMANCE

- Twin Caterpillar C18, shaft drive, diesel with 1150mhp each and an estimated maximum speed of 31 knots
- Twin MAN V8 1200, shaft drive, diesel with 1200mhp each and an estimated maximum speed of 32 knots

[CLICK HERE FOR  
FULL SPECIFICATIONS](#)



TARGA  
63 GTO

INTRODUCTION

MAIN  
FEATURES

EXTERIOR  
DESIGN

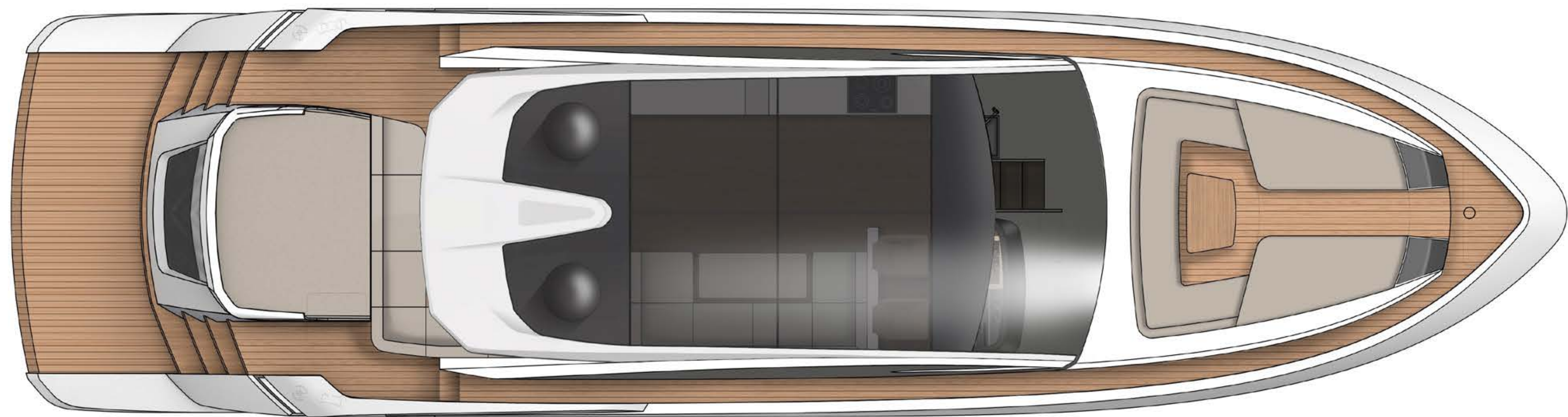
INTERIOR  
DESIGN

PRINCIPLE  
DIMENSIONS

**GENERAL  
ARRANGEMENTS**

CELEBRATING  
50 YEARS

DEALERS



## Exterior Deck – Targa 63 GTO





TARGA  
63 GTO

INTRODUCTION

MAIN  
FEATURES

EXTERIOR  
DESIGN

INTERIOR  
DESIGN

PRINCIPLE  
DIMENSIONS

GENERAL  
ARRANGEMENTS

CELEBRATING  
50 YEARS

DEALERS



Galley up



Galley down

## Main Deck

Enjoy a large cockpit with enough room for lounging al fresco on either the large sunpad or expansive seating area.



TARGA  
63 GTO

INTRODUCTION

MAIN  
FEATURES

EXTERIOR  
DESIGN

INTERIOR  
DESIGN

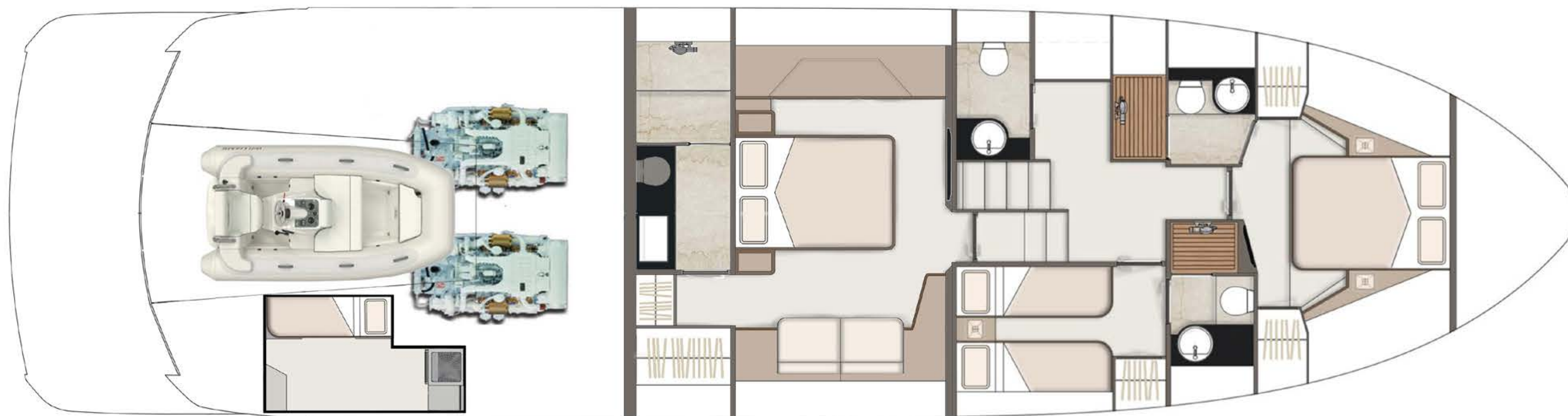
PRINCIPLE  
DIMENSIONS

GENERAL  
ARRANGEMENTS

CELEBRATING  
50 YEARS

DEALERS

  
**FAIRLINE**  
YACHTS



3 cabin with day head

## Lower Deck

The GTO's standard configuration has 3 large cabins each with en suite, and a day head off the lobby.



TARGA  
63 GTO

INTRODUCTION

MAIN  
FEATURES

EXTERIOR  
DESIGN

INTERIOR  
DESIGN

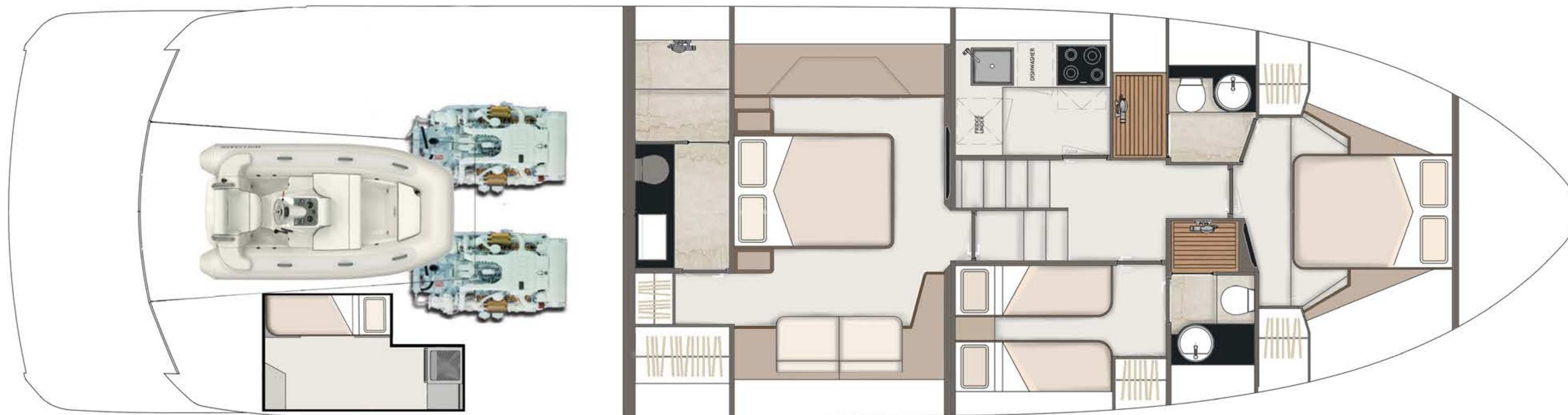
PRINCIPLE  
DIMENSIONS

GENERAL  
ARRANGEMENTS

CELEBRATING  
50 YEARS

DEALERS

  
**FAIRLINE**  
YACHTS



3 cabin, galley down

## Lower Deck

With the galley down, the forward VIP en suite doubles up as a day head.



TARGA  
63 GTO

INTRODUCTION

MAIN  
FEATURES

EXTERIOR  
DESIGN

INTERIOR  
DESIGN

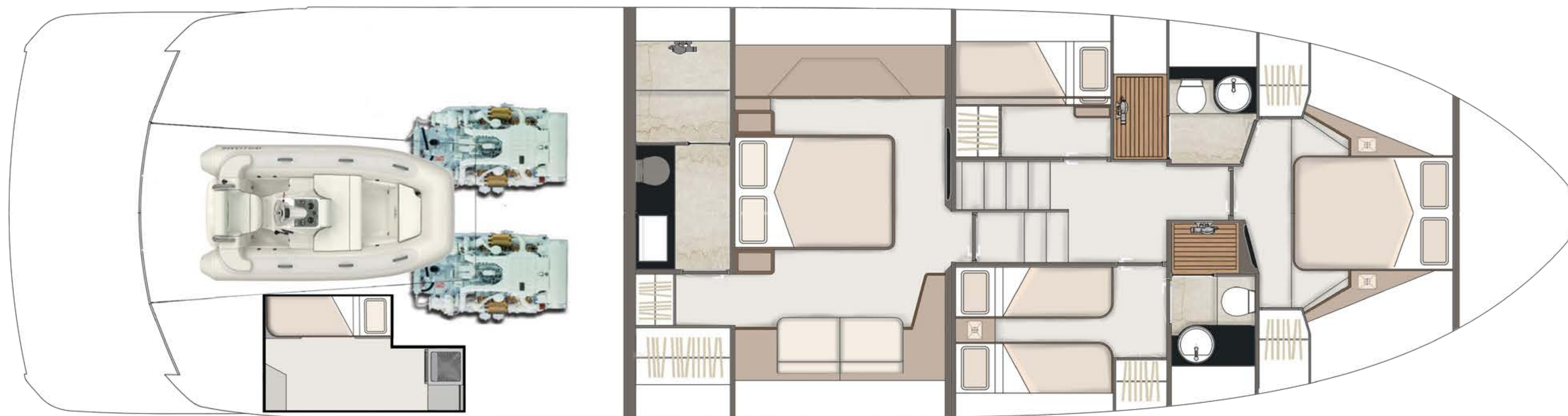
PRINCIPLE  
DIMENSIONS

GENERAL  
ARRANGEMENTS

CELEBRATING  
50 YEARS

DEALERS

  
**FAIRLINE**  
YACHTS



4 cabin

## Lower Deck

With the 4-cabin configuration, enjoy extra space for more guests by replacing the day head with an additional 2-bunk bed cabin. (Both 3 and 4-cabin configurations include the option of adding a single bed aft crew cabin with its own en suite facilities).



TARGA  
63 GTO

INTRODUCTION

MAIN  
FEATURES

EXTERIOR  
DESIGN

INTERIOR  
DESIGN

PRINCIPLE  
DIMENSIONS

GENERAL  
ARRANGEMENTS

CELEBRATING  
50 YEARS

DEALERS



# Last year we celebrated our 50th anniversary

## It was truly a Year Of Golden Moments

It's not enough to build a beautiful boat just for the sake of it. Building the kind of yachts which we are proud to put the Fairline name to, requires something more than just engineering genius or craftsmanship. It also requires the desire to create extraordinary moments for whoever owns it. Moments of joy, exhilaration, excitement...and even tranquility.

With 2017 being our 50th Anniversary, we took every possible opportunity to celebrate those incredible, golden moments since the brand's founder Jack Newington first launched the famous Fairline 19. This included moments like winning the World Yacht Trophy for 2017, becoming a finalist for the Motor Boat of the Year 2018 and being nominated for the European Powerboat of the Year 2018!



# An unrivalled dealership network

Just like the many parts that make up one of our extraordinary yachts, so too are international dealers handpicked and perfectly placed to cover anything and everything you could want from Fairline (you can visit [fairline.com](http://fairline.com) for details of your nearest dealer).

Fairline Argentina  
Fairline Benelux & W. Germany  
Fairline Brazil  
Fairline Channel Islands  
Fairline Chertsey  
Fairline Chesapeake  
Fairline Colombia  
Fairline Costa Blanca  
Fairline Côte d'Azur  
Fairline Croatia

Fairline Cyprus  
Fairline Denmark  
Fairline Eastbourne  
Fairline Florida  
Fairline Great Lakes  
Fairline Greece  
Fairline Hong Kong  
Fairline Ibiza  
Fairline India  
Fairline Israel

Fairline Italia  
Fairline Japan  
Fairline Korea  
Fairline Lebanon  
Fairline Malta  
Fairline Menorca  
Fairline Mexico  
Fairline Middle East  
Fairline Monaco  
Fairline New South Wales

Fairline New York  
Fairline New Zealand  
Fairline North Mallorca  
Fairline Poland  
Fairline Portugal  
Fairline Queensland  
Fairline Russia  
Fairline Singapore  
Fairline South Africa  
Fairline South China

Fairline South Mallorca  
Fairline Southampton  
Fairline Sverige  
Fairline Switzerland  
Fairline Thailand  
Fairline Torbay  
Fairline Turkey  
Fairline Ukraine  
Fairline Victoria  
Fairline Western Australia



# TARGA 63 GTO